

FIBERWDM focused on development and manufacture for the commercial and industrial grade 400G, 200G, 100G, 50G, 40G, 25G, 10G, 1.25G optical transceiver, and 3G/ 12G for HD video optical transceiver. The product used in IDC data centers, super-computing data centers, 5G networks(fronthoul, midhaul, backhaul), OTN/PTN, optical network switch, and other environmental applications.

Quality Policy

FIBERWDM regards the product quality as the foundation of enterprise survival and development, we adheres to quality policy as below:

“ Quality first, Customer first!”

“Full participation, Continuous improvement!”.

“ No defect input, No defect manufacturing, No defect outflow.”

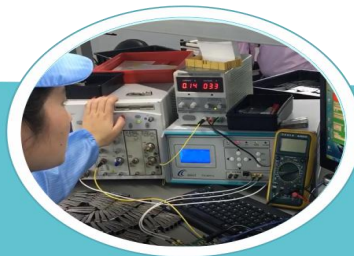
Services

1> Afer-sales service

FIBERWDM offers quality warranty. If the items you bought from FIBERWDM have quality problem during the guarantee period, We will, at its sole option, repair/replace the product or refund the original purchase price.

2> Technical Support

FIBERWDM set up specialized team for technical support team which will solve your problems about products operation, application or technical issues.



CATALOGUE

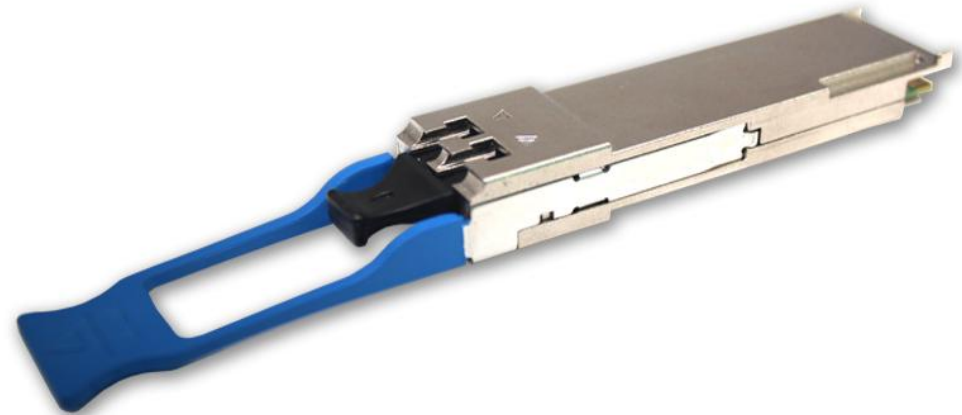
400G QSFP28-DD FR4 CWDM4 LC Optical Transceiver.....	4
400G QSFP-DD DR4 PAM4 1310nm MPO Optical Transceiver.....	5
400G QSFP-DD SR8 850nm MPO Optical Transceiver.....	6
200G QSFP-DD ER4 1310nm 40km PAM4 LC Optical Transceiver.....	7
200G QSFP SR4 100m 850nm PM4 MPO Transceiver.....	8
100G QSFP28 SR4 100m 850nm MPO Optical Transceiver.....	9
100G QSFP28 CWDM4 2km LC Optical Transceiver.....	10
100G QSFP28 LR4 10Km 1310nm LC Optical Transceiver.....	11
100G QSFP28 ER4 40Km 1310nm LC Optical Transceiver.....	12
100G QSFP28 ZR4 80Km 1310nm LC Optical Transceiver.....	13
50G QSFP28 LR4 10Km 1310nm LC Optical Transceiver.....	14
50G QSFP28 ER4 40Km 1310nm LC Optical Transceiver.....	15
40Gb/s QSFP+ SR4 150m 850nm MPO Optical Transceiver.....	16
40Gb/s QSFP+ LR4 10Km 1310nm LC Optical Transceiver.....	17
40Gb/s QSFP+ ER4 40Km 1310nm LC Optical Transceiver.....	18
25G SFP28 Optical Transceiver.....	19
25G CWDM SFP28 Optical Transceiver.....	20
25G MWDM SFP28 Optical Transceiver.....	21
25G LWDM SFP28 Optical Transceiver.....	22
25G DWDM SFP28 Optical Transceiver.....	23
25G SFP28 BIDI Optical Transceiver.....	24
10G SFP+ Optical Transceiver.....	25
10G CWDM SFP+ Optical Transceiver.....	26
10G DWDM SFP+ DWDM Optical Transceiver.....	27

10G BIDI SFP+ Optical Transceiver.....	28
1.25G SFP Optical Transceiver.....	29
1.25G CWDM SFP Optical Transceiver.....	30
1.25G DWDM SFP Optical Transceiver.....	31
1.25G BIDI SFP Optical Transceiver.....	32
3G Video SFP Optical Transceiver support 1080P 60HZ Video.....	33
3Gb/s SFP CWDM Optical Transceiver support 1080P 60HZ Video.....	34
12G Video SFP+ Optical Transceiver support 4K 60HZ Video.....	35

400G QSFP28-DD FR4 CWDM4 LC Optical Transceiver

Product Features

- ◆ Supports 400Gb/s FR4
- ◆ Lane bit rate 106.25Gb/s with PAM4
- ◆ CWDM4 (1271/1291/1311/1331nm) EML laser and PIN receiver
- ◆ Up to 2km transmission on SMF
- ◆ 8x53.125Gb/s with PAM4 electrical interface(400GAUI-8)
- ◆ Support Digital Diagnostic Monitoring interface
- ◆ QSFP-DD MSA package with duplex LC connector
- ◆ RoHs-10 compliant and lead-free
- ◆ Compliant to QSFP-DD MSA standard
- ◆ Single +3.3V power supply
- ◆ Maximum power consumption 12W
- ◆ All-metal housing for superior EMI performance
- ◆ Case operation temperature: 0°C to+ 70°C/ -40°C to +85°C



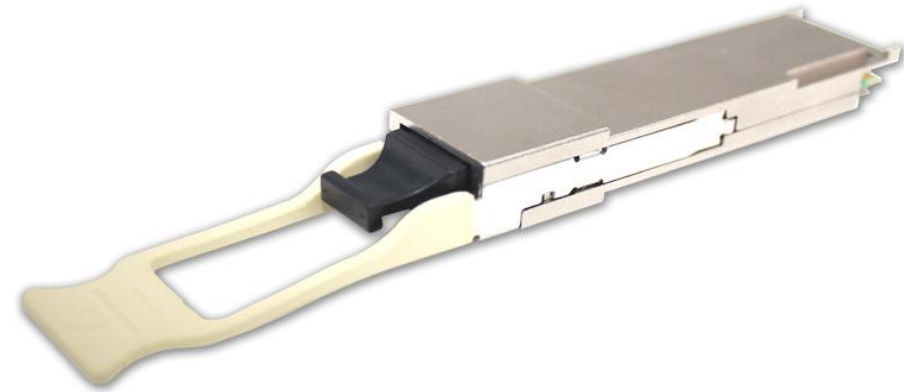
Order information

Product Number	Data Rate(Gb/s)	Wavelength(nm)	Reach(km)	LD	Tx Power(dBm)	PD	Rx Sens(dBm)	Temperature(°C)
RQ-400G-FR4	400	1271-1331nm	2	CWDM EML	-3.3~3.5	PIN	<-5	0~70
RQ-400G-FR4-I	400	1271-1331nm	2	CWDM EML	-3.3~3.5	PIN	<-5	-40~85

400G QSFP-DD DR4 PAM4 1310nm MPO Optical Transceiver

Product Features

- ◆ Supports 425Gb/s SR8
- ◆ 8x50G PAM4 VCSEL PIN photo detector
- ◆ Up to 500m transmission, 1310nm
- ◆ Hot Pluggable QSFP-DD form factor
- ◆ 8x53.125Gb/s with PAM4 electrical interface(400GAUI-8)
- ◆ Support Digital Diagnostic Monitoring interface
- ◆ MPO-12 Two Row receptacle
- ◆ RoHs-10 compliant and lead-free
- ◆ Compliant to QSFP-DD Rev 4.0
- ◆ Single +3.3V power supply
- ◆ Maximum power consumption 12W
- ◆ All-metal housing for superior EMI performance
- ◆ Case operation temperature: 0°C to+ 70°C/ -40°C to +85°C



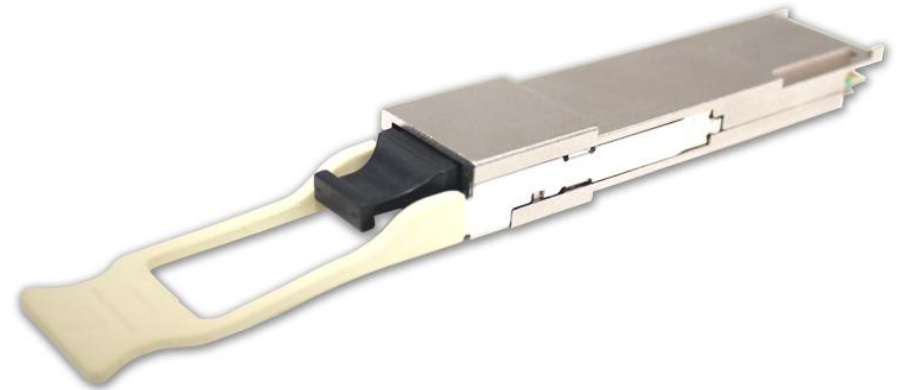
Order information

Product Number	Data Rate(Gb/s)	Wavelength(nm)	Reach(km)	LD	Tx Power(dBm)	PD	Rx Sens(dBm)	Temperature(°C)
RQ-400G-DR4	400	1310nm	0.5	EML	-2.9~4.0	PIN	<-5.9	0~70
RQ-400G-DR4-I	400	1310nm	0.5	EML	-2.9~4.0	PIN	<-5.9	-40~85

400G QSFP-DD SR8 850nm MPO Optical Transceiver

Product Features

- ◆ Supports 425Gb/s SR8
- ◆ 8x50G PAM4 VCSEL PIN photo detector
- ◆ Up to 70m transmission with OM3 multimode fiber and 100m transmission with OM4 multi-mode fiber
- ◆ Hot Pluggable QSFP-DD form factor
- ◆ 8x53.125Gb/s with PAM4 electrical interface(400GAUI-8)
- ◆ Support Digital Diagnostic Monitoring interface
- ◆ MPO-12 Two Row receptacle
- ◆ RoHs-10 compliant and lead-free
- ◆ Compliant to QSFP-DD Rev 4.0
- ◆ Single +3.3V power supply
- ◆ Maximum power consumption 12W
- ◆ All-metal housing for superior EMI performance
- ◆ Case operation temperature: 0°C to+ 70°C/ -40°C to +85°C



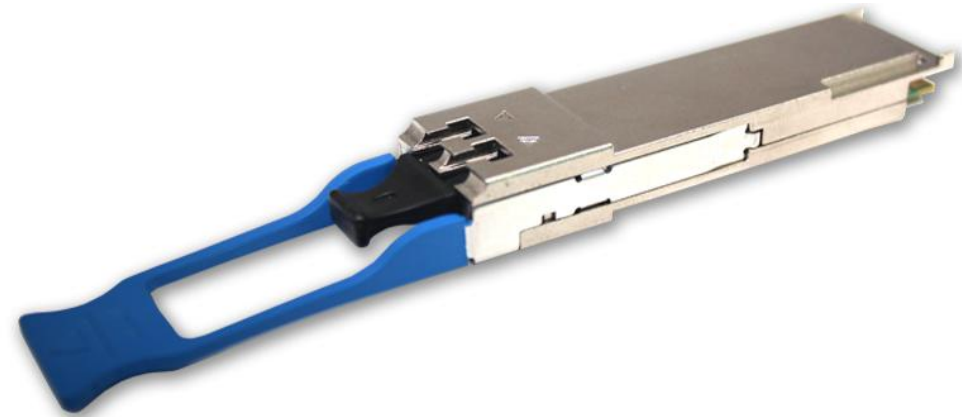
Order information

Product Number	Data Rate(Gb/s)	Wavelength(nm)	Reach(km)	LD	Tx Power(dBm)	PD	Rx Sens(dBm)	Temperature(°C)
RQ-400G-SR8	400	850nm	0.1	VCSEL	-6.0~4	PIN	<-7.0	0~70
RQ-400G-SR4-I	400	850nm	0.1	VCSEL	-6.0~4	PIN	<-7.0	-40~85

200G QSFP-DD ER4 1310nm 40km PAM4 LC Optical Transceiver

Product Features

- ◆ Supports 200Gb/s ER4
- ◆ Lane signaling rate 26.5625Gb/s with PAM4
- ◆ Up to 40km transmission on SMF
- ◆ Hot Pluggable QSFP-DD form factor
- ◆ Support Digital Diagnostic Monitoring interface
- ◆ QSFP-DD MSA package with duplex LC connector
- ◆ RoHs-10 compliant and lead-free
- ◆ Compliant to QSFP-DD Rev 4.0
- ◆ Single +3.3V power supply
- ◆ Maximum power consumption 12W
- ◆ All-metal housing for superior EMI performance
- ◆ Case operation temperature: 0°C to+ 70°C/ -40°C to +85°C



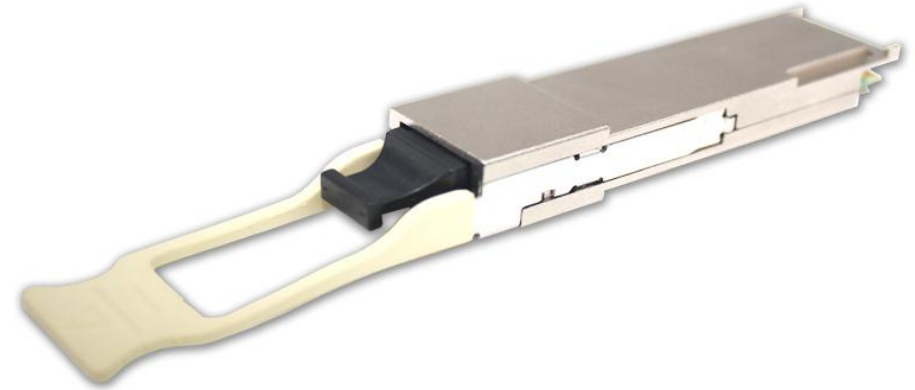
Order information

Product Number	Data Rate(Gb/s)	Wavelength(nm)	Reach(km)	LD	Tx Power(dBm)	PD	Rx Sens(dBm)	Temperature(°C)
RQ-200G-ER4	200	1310nm	40	EML	-0.4~6.6	APD	<-15	0~70
RQ-200G-ER4-I	200	1310nm	40	EML	-0.4~6.6	APD	<-15	-40~85

200G QSFP SR4 100m 850nm PM4 MPO Transceiver

Features

- ◆ Supports 212.5Gb/s bit rate
- ◆ 4x50G PAM4 VCSEL PIN photo detector
- ◆ Up to 70m transmission with OM3 multimode fiber and 100m transmissior with OM4 multi-mode fiber
- ◆ Hot Pluggable QSFP form factor
- ◆ MPO/MPT Connector
- ◆ Digital diagnostic monitoring support
- ◆ Single 3.3V power supply
- ◆ RoHS-10 compliant and lead-free
- ◆ Maximum power consumption 6.0W
- ◆ All-metal housing for superior EMI performance
- ◆ Case operating temperature: 0°C to+ 70°C/ -40°C to +85°C



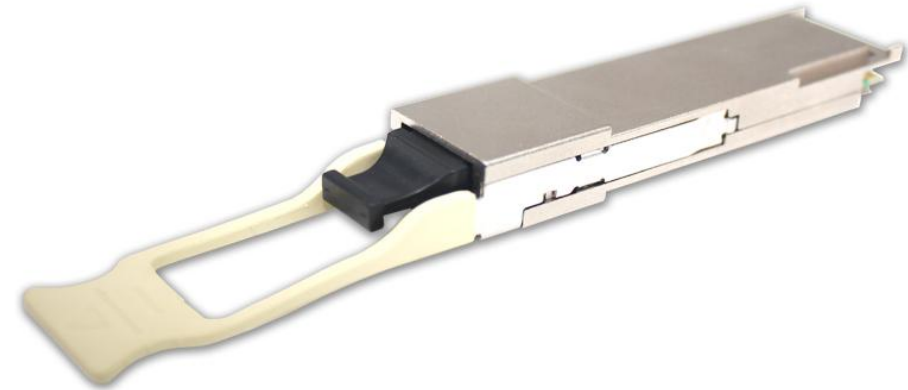
Order information

Product Number	Data Rate(Gb/s)	Wavelength(nm)	Reach(km)	LD	Tx Power(dBm)	PD	Rx Sens(dBm)	Temperature(°C)
RQ-200G-SR4	200	850nm	0.1	VCSEL	-6.0~4.0	PIN	<-7	0~70
RQ-200G-SR4-I	200	850nm	0.1	VCSEL	-6.0~4.0	PIN	<-7	-40~85

100G QSFP28 SR4 100m 850nm MPO Optical Transceiver

Features

- ◆ Supports 100Gb/s bit rate
- ◆ Up to 4x27.952G data rate per channel, 850nm VCSEL technology.
- ◆ Up to 70m transmission with OM3 multimode fiber and 100m transmission with OM4 multi-mode fiber
- ◆ MPO/MPT Connector
- ◆ Hot Pluggable QSFP form factor
- ◆ Digital diagnostic monitoring support
- ◆ Single 3.3V power supply
- ◆ RoHS-10 compliant and lead-free
- ◆ Maximum power consumption 2.0W
- ◆ All-metal housing for superior EMI performance
- ◆ Case operating temperature: 0°C to+ 70°C/ -40°C to +85°C



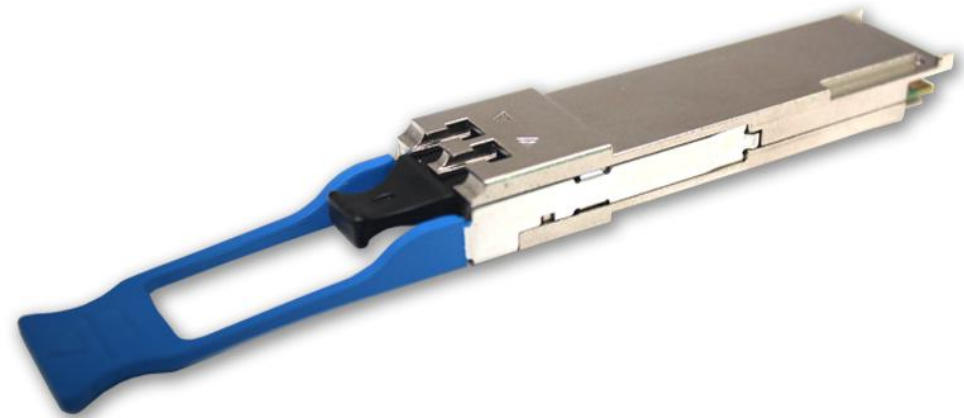
Order information

Product Number	Data Rate(Gb/s)	Wavelength(nm)	Reach(km)	LD	Tx Power(dBm)	PD	Rx Sens(dBm)	Temperature(°C)
RQ-100G-SR4	100	850nm	0.1	VCSEL	-8.4~2.4	PIN	<-10.3	0~70
RQ-100G-SR4-I	100	850nm	0.1	VCSEL	-8.4~2.4	PIN	<-10.3	-40~85

100G QSFP28 CWDM4 2km LC Optical Transceiver

Features

- ◆ CWDM 4 Lanes: 1271/1291/1311/1331nm
- ◆ Up to 4x25.78G data rate per channel.
- ◆ Up to 2km transmission over SMF
- ◆ Duplex LC optical Connector
- ◆ Hot Pluggable QSFP form factor
- ◆ Digital diagnostic monitoring support
- ◆ Single 3.3V power supply
- ◆ RoHS-10 compliant and lead-free
- ◆ Maximum power consumption 3.5W
- ◆ All-metal housing for superior EMI performance
- ◆ Case operating temperature: 0°C to+ 70°C/ -40°C to +85°C



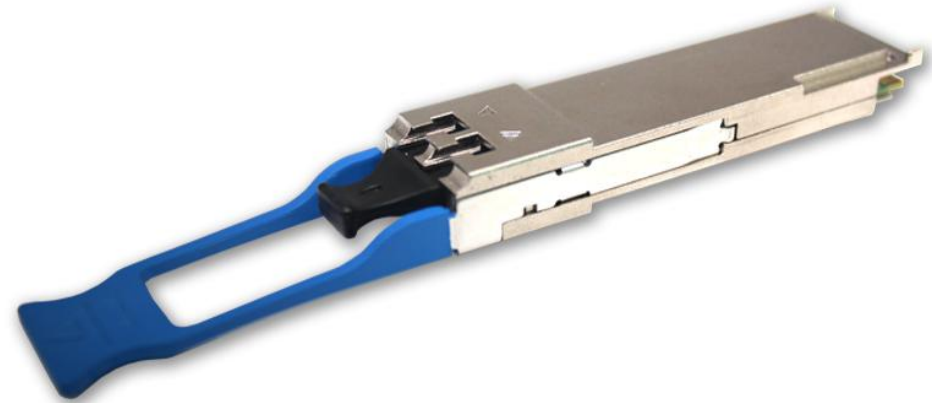
Order information

Product Number	Data Rate(Gb/s)	Wavelength(nm)	Reach(km)	LD	Tx Power(dBm)	PD	Rx Sens(dBm)	Temperature(°C)
RQ-100G-CWDM4	100	1271-1331nm	2	CWDM DML	-6.5~2.5	PIN	<-10	0~70
RQ-100G-CWDM4-I	100	1271-1331nm	2	CWDM DML	-6.5~2.5	PIN	<-10	-40~85

100G QSFP28 LR4 10Km 1310nm LC Optical Transceiver

Features

- ◆ Supports 100Gb/s bit rate, 4x25G data rate per channel
- ◆ LAN WDM: 1295.56/1300.05/1304.58/1309.14nm
- ◆ Up to 10km over SMF
- ◆ Duplex LC Connector
- ◆ Hot Pluggable QSFP form factor
- ◆ Digital diagnostic monitoring support
- ◆ Single 3.3V power supply
- ◆ RoHS-10 compliant and lead-free
- ◆ Maximum power consumption 3.5W
- ◆ All-metal housing for superior EMI performance
- ◆ Case operating temperature: 0°C to+ 70°C/ -40°C to +85°C



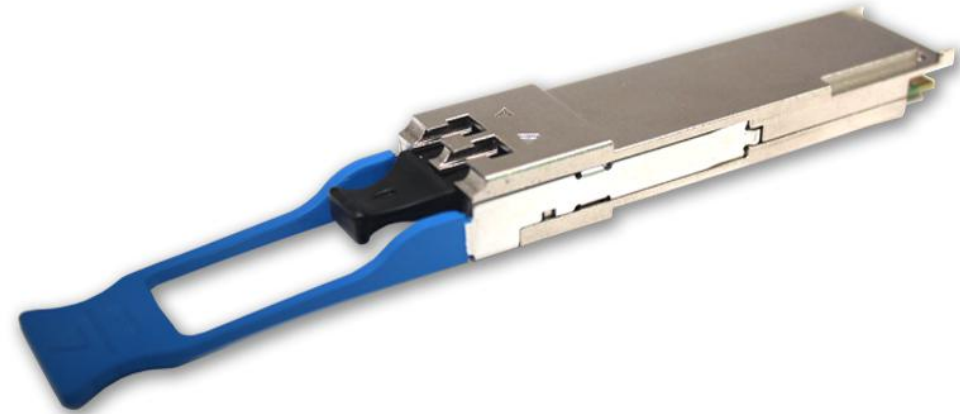
Order information

Product Number	Data Rate(Gb/s)	Wavelength(nm)	Reach(km)	LD	Tx Power(dBm)	PD	Rx Sens(dBm)	Temperature(°C)
RQ-100G-LR4	100	1310nm	10	LAN WDM DFB	-4.3~4.5	PIN	<-10.6	0~70
RQ-100G-LR4-I	100	1310nm	10	LAN WDM DFB	-4.3~4.5	PIN	<-10.6	-40~85

100G QSFP28 ER4 40Km 1310nm LC Optical Transceiver

Features

- ◆ Supports 100Gb/s bit rate, 4x25G data rate per channel
- ◆ LAN WDM: 1295.56/1300.05/1304.58/1309.14nm
- ◆ Up to 40km over SMF
- ◆ Duplex LC Connector
- ◆ Hot Pluggable QSFP form factor
- ◆ Digital diagnostic monitoring support
- ◆ Single 3.3V power supply
- ◆ RoHS-10 compliant and lead-free
- ◆ Maximum power consumption 4.5W
- ◆ All-metal housing for superior EMI performance
- ◆ Case operating temperature: 0°C to+ 70°C/ -40°C to +85°C



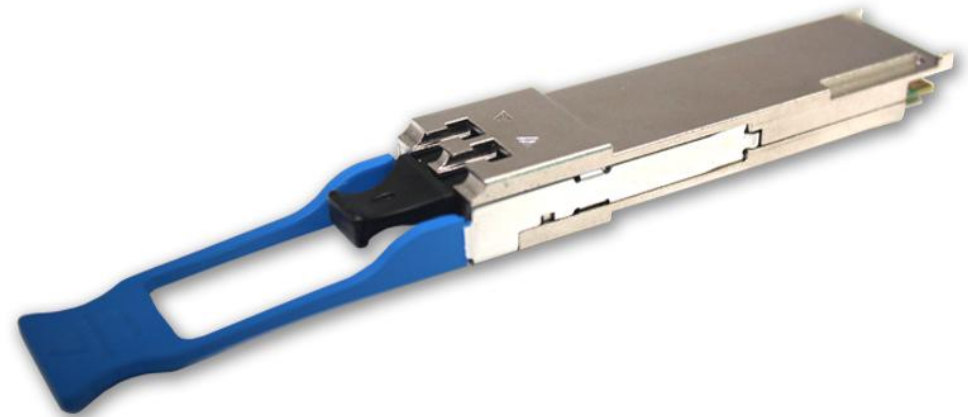
Order information

Product Number	Data Rate(Gb/s)	Wavelength(nm)	Reach(km)	LD	Tx Power(dBm)	PD	Rx Sens(dBm)	Temperature(°C)
RQ-100G-ER4	100	1310nm	40	LAN WDM EML	-2.9~4.5	APD	<-14.65	0~70
RQ-100G-ER4-I	100	1310nm	40	LAN WDM EML	-2.9~4.5	APD	<-14.65	-40~85

100G QSFP28 ZR4 80Km 1310nm LC Optical Transceiver

Features

- ◆ Supports 100Gb/s bit rate, 4x25G data rate per channel
- ◆ LAN WDM: 1295.56/1300.05/1304.58/1309.14nm
- ◆ Up to 80km over SMF
- ◆ Duplex LC Connector
- ◆ Hot Pluggable QSFP form factor
- ◆ Digital diagnostic monitoring support
- ◆ Single 3.3V power supply
- ◆ RoHS-10 compliant and lead-free
- ◆ Maximum power consumption 5.5W
- ◆ All-metal housing for superior EMI performance
- ◆ Case operating temperature: 0°C to+ 70°C/ -40°C to +85°C



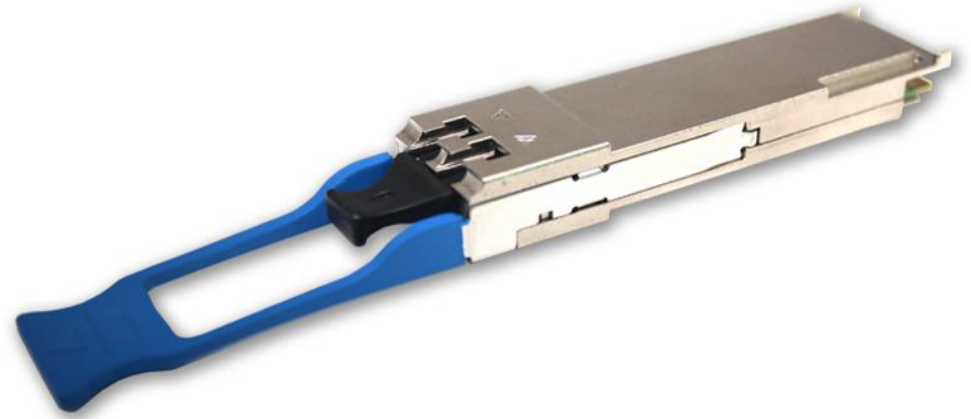
Order information

Product Number	Data Rate(Gb/s)	Wavelength(nm)	Reach(km)	LD	Tx Power(dBm)	PD	Rx Sens(dBm)	Temperature(°C)
RQ-100G-ZR4	100	1310nm	80	LAN WDM EML	2~4.5	PIN+SOA	<-24	0~70
RQ-100G-ZR4-I	100	1310nm	80	LAN WDM EML	2~4.5	PIN+SOA	<-24	-40~85

50G QSFP28 LR4 10Km 1310nm LC Optical Transceiver

Features

- ◆ Supports 50Gb/s bit rate
- ◆ Lane signaling rate 26.56Gb/s with PAM4
- ◆ Up to 10km over SMF
- ◆ Duplex LC Connector
- ◆ Hot Pluggable QSFP form factor
- ◆ Digital diagnostic monitoring support
- ◆ Single 3.3V power supply
- ◆ RoHS-10 compliant and lead-free
- ◆ Maximum power consumption 3.5W
- ◆ All-metal housing for superior EMI performance
- ◆ Case operating temperature: 0°C to+ 70°C/ -40°C to +85°C



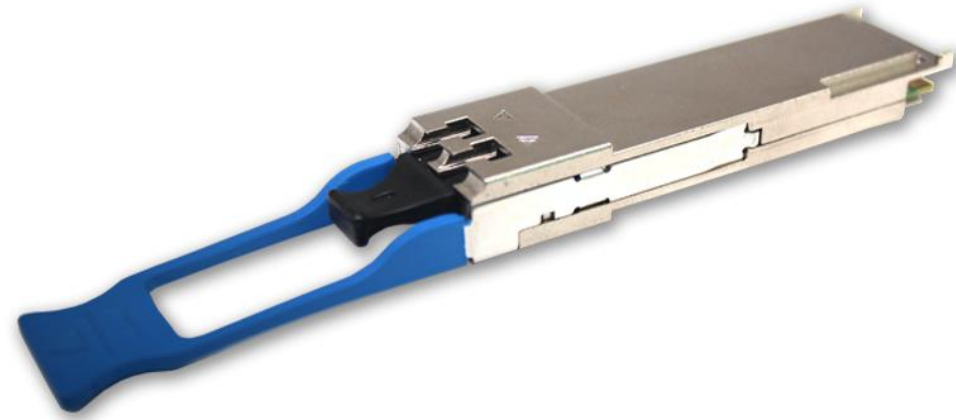
Order information

Product Number	Data Rate(Gb/s)	Wavelength(nm)	Reach(km)	LD	Tx Power(dBm)	PD	Rx Sens(dBm)	Temperature(°C)
RQ-50G-LR4	50	1310nm	10	DFB	-4.5~4.2	PIN	<-8.4	0~70
RQ-50G-LR4-I	50	1310nm	10	DFB	-4.5~4.2	PIN	<-8.4	-40~85

50G QSFP28 ER4 40Km 1310nm LC Optical Transceiver

Features

- ◆ Supports 50Gb/s bit rate
- ◆ Lane signaling rate 26.56Gb/s with PAM4
- ◆ Up to 40km over SMF
- ◆ Duplex LC Connector
- ◆ Hot Pluggable QSFP form factor
- ◆ Digital diagnostic monitoring support
- ◆ Single 3.3V power supply
- ◆ RoHS-10 compliant and lead-free
- ◆ Maximum power consumption 4.5W
- ◆ All-metal housing for superior EMI performance
- ◆ Case operating temperature: 0°C to+ 70°C/ -40°C to +85°C



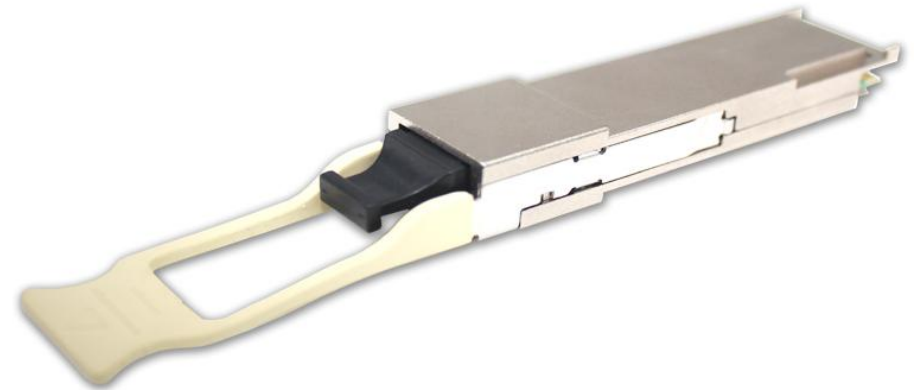
Order information

Product Number	Data Rate(Gb/s)	Wavelength(nm)	Reach(km)	LD	Tx Power(dBm)	PD	Rx Sens(dBm)	Temperature(°C)
RQ-50G-LR4	50	1310nm	40	EML	-0.4~6.6	APD	<-15	0~70
RQ-50G-LR4-I	50	1310nm	40	EML	-0.4~6.6	APD	<-15	-40~85

40Gb/s QSFP+ SR4 150m 850nm MPO Optical Transceiver

Features

- ◆ Supports 40Gb/s bit rate
- ◆ Up to 4x10G data rate per channel, 850nm VCSEL technology.
- ◆ Up to 100m transmission with OM3 multimode fiber and 150m transmission with OM4 multi-mode fiber
- ◆ MPO/MPT Connector
- ◆ Hot Pluggable QSFP form factor
- ◆ Digital diagnostic monitoring support
- ◆ Single 3.3V power supply
- ◆ RoHS-10 compliant and lead-free
- ◆ Maximum power consumption 1.3W
- ◆ All-metal housing for superior EMI performance
- ◆ Case operating temperature: 0°C to+ 70°C/ -40°C to +85°C



Order information

Product Number	Data Rate(Gb/s)	Wavelength(nm)	Reach(km)	LD	Tx Power(dBm)	PD	Rx Sens(dBm)	Temperature(°C)
RQ-40G-SR4	40	850nm	0.15	VCSEL	-7.6~1.0	PIN	<-11.1	0~70
RQ-40G-SR4-I	40	850nm	0.15	VCSEL	-7.6~1.0	PIN	<-11.1	-40~85

40Gb/s QSFP+ LR4 10Km 1310nm LC Optical Transceiver

Features

- ◆ Supports 40Gb/s bit rate, 4x11.2G data rate per channel
- ◆ CWDM 4: 1271/1291/1311/1331nm
- ◆ Up to 10km over SMF
- ◆ Duplex LC Connector
- ◆ Hot Pluggable QSFP+ form factor
- ◆ Digital diagnostic monitoring support
- ◆ Single 3.3V power supply
- ◆ RoHS-10 compliant and lead-free
- ◆ Maximum power consumption 3.5W
- ◆ All-metal housing for superior EMI performance
- ◆ Case operating temperature: 0°C to+ 70°C/ -40°C to +85°C



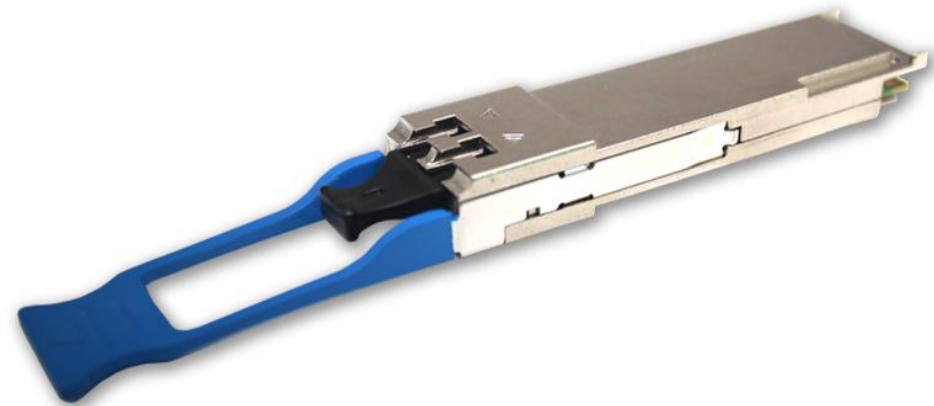
Order information

Product Number	Data Rate(Gb/s)	Wavelength(nm)	Reach(km)	LD	Tx Power(dBm)	PD	Rx Sens(dBm)	Temperature(°C)
RQ-40G-LR4	40	CWDM 4	10	DFB	-7~2.3	PIN	<-13.5	0~70
RQ-40G-LR4-I	40	CWDM 4	10	DFB	-7~2.3	PIN	<-13.5	-40~85

40Gb/s QSFP+ ER4 40Km 1310nm LC Optical Transceiver

Features

- ◆ Supports 40Gb/s bit rate, 4x11.2G data rate per channel
- ◆ CWDM 4: 1271/1291/1311/1331nm
- ◆ Up to 40km over SMF
- ◆ Duplex LC Connector
- ◆ Hot Pluggable QSFP+ form factor
- ◆ Digital diagnostic monitoring support
- ◆ Single 3.3V power supply
- ◆ RoHS-10 compliant and lead-free
- ◆ Maximum power consumption 3.8W
- ◆ All-metal housing for superior EMI performance
- ◆ Case operating temperature: 0°C to+ 70°C/ -40°C to +85°C



Order information

Product Number	Data Rate(Gb/s)	Wavelength(nm)	Reach(km)	LD	Tx Power(dBm)	PD	Rx Sens(dBm)	Temperature(°C)
RQ-40G-LR4	40	CWDM 4	40	DML	-2.7~4.5	APD	<-19	0~70
RQ-40G-LR4-I	40	CWDM 4	40	DML	-2.7~4.5	APD	<-19	-40~85

25G SFP28 Optical Transceiver

Features

- ◆ Supports 25Gb/s bit rate
- ◆ Duplex LC Connector
- ◆ Hot Pluggable SFP28 form factor
- ◆ Digital diagnostic monitoring support
- ◆ Single 3.3V power supply
- ◆ RoHS-10 compliant and lead-free
- ◆ All-metal housing for superior EMI performance
- ◆ Case operating temperature: 0°C to+ 70°C/ -40°C to +85°C



Order information

Product Number	Data Rate(Gb/s)	Wavelength(nm)	Reach(km)	LD	Tx Power(dBm)	PD	Rx Sens(dBm)	Temperature(°C)
RSPD-25G-SR4	25	850	0.1	VCSEL	-5~2.4	PIN	<-10.3	0~70
RSPD-25G-LR4	25	1310	10	DFB	-7.0~2.0	PIN	<-14	0~70
RSPD-25G-LR4-I	25	1310	10	DFB	-7.0~2.0	PIN	<-14	-40~85
RSPD-25G-ER4	25	1310	30	DFB	-3.0~6.0	APD	<-18	0~70
RSPD-25G-ER4-I	25	1310	30	DFB	-3.0~6.0	APD	<-18	-40~85
RQ-25G-ER4-40	25	1310	40	EML	-3.0~6.0	APD	<-21	0~70
RSPD-25G-ER4-40-I	25	1310	40	EML	-3.0~6.0	APD	<-21	-40~85

25G CWDM SFP28 Optical Transceiver

Features

- ◆ Supports 25Gb/s bit rate
- ◆ CWDM:1270/1290/1310/1330/1350/1370nm
- ◆ Duplex LC Connector
- ◆ Hot Pluggable SFP28 form factor
- ◆ Digital diagnostic monitoring support
- ◆ Single 3.3V power supply
- ◆ RoHS-10 compliant and lead-free
- ◆ All-metal housing for superior EMI performance
- ◆ Case operating temperature: 0°C to+ 70°C/ -40°C to +85°C



Order information

Product Number	Data Rate(Gb/s)	Wavelength(nm)	Reach(km)	LD	Tx Power(dBm)	PD	Rx Sens(dBm)	Temperature(°C)
RSPD-25GC10-CXX	25	1270-1370	10	DFB	-7.0~2.5	PIN	<-14	0~70
RSPD-25GC10-CXX-I	25	1270-1370	10	DFB	-7.0~2.5	PIN	<-14	-40~85
RSPD-25GC10E-CXX	25	1270-1370	10	EML	-3.0~6.0	APD	<-18	0~70
RSPD-25GC10E-CXX-I	25	1270-1370	10	EML	-3.0~6.0	APD	<-18	-40~85

25G MWDM SFP28 Optical Transceiver

Features

- ◆ Supports 25Gb/s bit rate
- ◆ 12 channels MWDM: 1267.50/1274.50/1287.50/1294.50/1307.50/1314.50/1327.50/1334.50/1347.50/1354.50/1367.50/1374.50nm
- ◆ Duplex LC Connector
- ◆ Hot Pluggable SFP28 form factor
- ◆ Digital diagnostic monitoring support
- ◆ Single 3.3V power supply
- ◆ RoHS-10 compliant and lead-free
- ◆ All-metal housing for superior EMI performance
- ◆ Case operating temperature: 0°C to+ 70°C/ -40°C to +85°C



Order information

Product Number	Data Rate(Gb/s)	Wavelength(nm)	Reach(km)	LD	Tx Power(dBm)	PD	Rx Sens(dBm)	Temperature(°C)
RSPD-25GM10-XX	25	MWDM	10	DFB	-7.0~2.5	PIN	<-14	0~70
RSPD-25GM10-XXI	25	MWDM	10	DFB	-7.0~2.5	PIN	<-14	-40~85

25G LWDM SFP28 Optical Transceiver

Features

- ◆ Supports 25Gb/s bit rate
- ◆ 12 channel LWDM:1269.23/1273.54/1277.89/1282.26/1282.66/1291.10/1295.56/1300.05/1304.58/1309.14/1313.73/1332.41nm
- ◆ Duplex LC Connector
- ◆ Hot Pluggable SFP28 form factor
- ◆ Digital diagnostic monitoring support
- ◆ Single 3.3V power supply
- ◆ RoHS-10 compliant and lead-free
- ◆ All-metal housing for superior EMI performance
- ◆ Case operating temperature: 0°C to+ 70°C/ -40°C to +85°C



Order information

Product Number	Data Rate(Gb/s)	Wavelength(nm)	Reach(km)	LD	Tx Power(dBm)	PD	Rx Sens(dBm)	Temperature(°C)
RSPD-25GL10-XX	25	LWDM	10	DFB	-7.0~2.5	PIN	<-14	0~70
RSPD-25GL10-XX-I	25	LWDM	10	DFB	-7.0~2.5	PIN	<-14	-40~85

25G DWDM SFP28 Optical Transceiver

Features

- ◆ Supports 25Gb/s bit rate
- ◆ DWDM ITU C-BAND:CH17-CH61
- ◆ Duplex LC Connector
- ◆ Hot Pluggable SFP28 form factor
- ◆ Digital diagnostic monitoring support
- ◆ Single 3.3V power supply
- ◆ RoHS-10 compliant and lead-free
- ◆ All-metal housing for superior EMI performance
- ◆ Case operating temperature: 0°C to+ 70°C/ -40°C to +85°C



Order information

Product Number	Data Rate(Gb/s)	Wavelength(nm)	Reach(km)	LD	Tx Power(dBm)	PD	Rx Sens(dBm)	Temperature(°C)
RSPD-25GD10-XX	25	DWDM	10	DFB	-7.0~2.5	PIN	<-14	0~70
RSPD-25GD10-XX-I	25	DWDM	10	DFB	-7.0~2.5	PIN	<-14	-40~85
RSPD-25GD40-XX	25	DWDM	40	EML	-3.0~6.0	APD	<-21	0~70
RSPD-25GD40-XX-I	25	DWDM	40	EML	-3.0~6.0	APD	<-21	-40~85

25G SFP28 BIDI Optical Transceiver

Features

- ◆ Supports 25Gb/s bit rate
- ◆ Bi-direction transmission over a single fiber, 1270/1330nm
- ◆ Single LC Connector
- ◆ Hot Pluggable SFP28 form factor
- ◆ Digital diagnostic monitoring support
- ◆ Single 3.3V power supply
- ◆ RoHS-10 compliant and lead-free
- ◆ All-metal housing for superior EMI performance
- ◆ Case operating temperature: 0°C to+ 70°C/ -40°C to +85°C



Order information

Product Number	Data Rate(Gb/s)	Wavelength(nm)	Reach(km)	LD	Tx Power(dBm)	PD	Rx Sens(dBm)	Temperature(°C)
RSPD-25GBD10-2733	25	TX1270/RX1330	10	DFB	-7.0~2.5	PIN	<-14	0~70
RSPD-25GBD10-3327	25	TX1330/RX1270	10	DFB	-7.0~2.5	PIN	<-14	-40~85
RSPD-25GBD40-2733	25	TX1270/RX1330	40	DFB	-7.0~2.5	APD	<-21	0~70
RSPD-25GBD40-3327	25	TX1330/RX1270	40	DFB	-7.0~2.5	APD	<-21	-40~85

10G SFP+ Optical Transceiver

Features

- ◆ Supports 10Gb/s bit rate
- ◆ Duplex LC Connector
- ◆ Hot Pluggable SFP+ form factor
- ◆ Digital diagnostic monitoring support
- ◆ Single 3.3V power supply
- ◆ RoHS-10 compliant and lead-free
- ◆ All-metal housing for superior EMI performance
- ◆ Case operating temperature: 0°C to+ 70°C/ -40°C to +85°C



Order information

Product Number	Data Rate(Gb/s)	Wavelength(nm)	Reach(km)	LD	Tx Power(dBm)	PD	Rx Sens(dBm)	Temperature(°C)
RSPD-10GM03-85/I	10	850	0.3	VCSEL	-6~-1	PIN	<-11	0~70/-40~85
RSPD-10GS10-31/I	10	1310	10	DFB	-6.5~0.5	PIN	<-14.4	0~70/-40~85
RSPD-10GS40-31/I	10	1310	10	DFB	-1~3	PIN	<-15.8	0~70/-40~85
RSPD-10GS40-55/I	10	1550	40	EML	-1~3	PIN	<-15.8	0~70/-40~85
RSPD-10GS80-55/I	10	1550	80	EML	-0~5	APD	<-23	0~70/-40~85
RSPD-10GS100-55/I	10	1550	100	EML	0~6	APD	<-26	0~70/-40~85
RSPD-10G-RJ45/I	10	RJ45	0.08					0~70/-40~85

10G CWDM SFP+ Optical Transceiver

Features

- ◆ Supports 10Gb/s bit rate
- ◆ Duplex LC Connector
- ◆ Hot Pluggable SFP+ form factor
- ◆ Digital diagnostic monitoring support
- ◆ Single 3.3V power supply
- ◆ RoHS-10 compliant and lead-free
- ◆ All-metal housing for superior EMI performance
- ◆ Case operating temperature: 0°C to+ 70°C/ -40°C to +85°C



Order information

Product Number	Data Rate(Gb/s)	Wavelength(nm)	Reach(km)	LD	Tx Power(dBm)	PD	Rx Sens(dBm)	Temperature(°C)
RSPD-10GC10-XX/I	10	CWDM	10	DFB	-6.5~0.5	PIN	<-14.4	0~70/-40~85
RSPD-10GC20-XX/I	10	1270-1590	20	DFB	-6.5~0.5	PIN	<-14.4	0~70/-40~85
RSPD-10GS40-XX/I	10	1270-1370/1470-1610	40	DFB	-1~3	PIN	<-15.8	0~70/-40~85
RSPD-10GS80-XX/I	10	1470-1610	80	EML	-0~5	APD	<-23	0~70/-40~85

10G DWDM SFP+ DWDM Optical Transceiver

Features

- ◆ Supports 10Gb/s bit rate
- ◆ Duplex LC Connector
- ◆ Hot Pluggable SFP+ form factor
- ◆ Digital diagnostic monitoring support
- ◆ Single 3.3V power supply
- ◆ RoHS-10 compliant and lead-free
- ◆ All-metal housing for superior EMI performance
- ◆ Case operating temperature: 0°C to+ 70°C/ -40°C to +85°C



Order information

Product Number	Data Rate(Gb/s)	Wavelength(nm)	Reach(km)	LD	Tx Power(dBm)	PD	Rx Sens(dBm)	Temperature(°C)
RSPD-10GD40-XX/I	10	100GHZ /50GHZ DWDM	40	DFB	-1~3	PIN	<-15.8	0~70/-40~85
RSPD-10GD80-XX/I	10	100GHZ /50GHZ DWDM	80	DFB	-1~3	APD	<-23	0~70/-40~85
RSPD-10GS100-XX/I	10	100GHZ /50GHZ DWDM	100	EML	0~6	APD	<-26	0~70/-40~85

10G BIDI SFP+ Optical Transceiver

Features

- ◆ Supports 10Gb/s bit rate
- ◆ Bi-direction transmission, LC Connector
- ◆ Hot Pluggable SFP+ form factor
- ◆ Digital diagnostic monitoring support
- ◆ Single 3.3V power supply
- ◆ RoHS-10 compliant and lead-free
- ◆ All-metal housing for superior EMI performance
- ◆ Case operating temperature: 0°C to+ 70°C/ -40°C to +85°C



Order information

Product Number	Data Rate(Gb/s)	Wavelength(nm)	Reach(km)	LD	Tx Power(dBm)	PD	Rx Sens(dBm)	Temperature(°C)
RSPD-10GBD10-2733/I	10	TX1270/RX1330	10	DFB	-6.5~0.5	PIN	<-14.4	0~70/-40~85
RSPD-10GBD10-3327/I	10	TX1330/RX1270	10	DFB	-6.5~0.5	PIN	<-14.4	0~70/-40~85
RSPD-10GBD40-2733/I	10	TX1270/RX1330	40	DFB	-1~3	PIN	<-15.8	0~70/-40~85
RSPD-10GBD40-3327/I	10	TX1330/RX1270	40	DFB	-1~3	APD	<-15.8	0~70/-40~85
RSPD-10GBD60-2733/I	10	TX1270/RX1330	60	DFB	-1~3	PIN	<-20	0~70/-40~85
RSPD-10GBD60-3327/I	10	TX1330/RX1270	60	DFB	-1~3	APD	<-20	0~70/-40~85
RSPD-10GBD80-4955/I	10	TX1490/RX1550	80	EML	0~5	APD	<-23	0~70/-40~85
RSPD-10GBD80-5549/I	10	TX1550/RX1490	80	EML	0~5	APD	<-23	0~70/-40~85

1.25G SFP Optical Transceiver

Features

- ◆ Supports 1.25Gb/s bit rate
- ◆ Duplex LC Connector
- ◆ Hot Pluggable SFP+ form factor
- ◆ Digital diagnostic monitoring support
- ◆ Single 3.3V power supply
- ◆ RoHS-10 compliant and lead-free
- ◆ All-metal housing for superior EMI performance
- ◆ Case operating temperature: 0°C to+ 70°C/ -40°C to +85°C



Order information

Product Number	Data Rate(Gb/s)	Wavelength(nm)	Reach(km)	LD	Tx Power(dBm)	PD	Rx Sens(dBm)	Temperature(°C)
RSPD-03M05-85/I	1.25	850	0.5	VCSEL	-14~-9	PIN	<-18	0~70/-40~85
RSPD-03S10-31/I	1.25	1310	10	FP	-9~-3	PIN	<-18	0~70/-40~85
RSPD-03S40-31/I	1.25	1310	40	FP	-5~0	PIN	<-24	0~70/-40~85
RSPD-03S40-55/I	1.25	1550	40	DFB	-5~0	PIN	<-24	0~70/-40~85
RSPD-03S80-55/I	1.25	1550	80	DFB	0~5	PIN	<-24	0~70/-40~85
RSPD-03S120-55/I	1.25	1550	120	DFB	0~5	APD	<-31	0~70/-40~85
RSPD-RJ45A/I	10/100/1000M	RJ45	0.1					0~70/-40~85
RSPD-RJ45B/I	1000M	RJ45	0.1					0~70/-40~85

1.25G CWDM SFP Optical Transceiver

Features

- ◆ Supports 10Gb/s bit rate
- ◆ CWDM: 1270-1610nm, 18 channels
- ◆ Duplex LC Connector
- ◆ Hot Pluggable SFP+ form factor
- ◆ Digital diagnostic monitoring support
- ◆ Single 3.3V power supply
- ◆ RoHS-10 compliant and lead-free
- ◆ All-metal housing for superior EMI performance
- ◆ Case operating temperature: 0°C to+ 70°C/ -40°C to +85°C



Order information

Product Number	Data Rate(Gb/s)	Wavelength(nm)	Reach(km)	LD	Tx Power(dBm)	PD	Rx Sens(dBm)	Temperature(°C)
RSPD-03C20-XX/I	1.25G	CWDM	20	FP	-9~-3	PIN	<-24	0~70/-40~85
RSPD-03C40-XX/I	1.25G	CWDM	40	DFB	-5~0	PIN	<-24	0~70/-40~85
RSPD-03C80-XX/I	1.25G	CWDM	80	DFB	-1~3	PIN	<-24	0~70/-40~85
RSPD-03C120-XX/I	1.25G	CWDM	120	DFB	-0~5	APD	<-31	0~70/-40~85

1.25G DWDM SFP Optical Transceiver

Features

- ◆ Supports 10Gb/s bit rate
- ◆ 50GHZ or 100GHZ DWDM, C-band ITU
- ◆ Duplex LC Connector
- ◆ Hot Pluggable SFP+ form factor
- ◆ Digital diagnostic monitoring support
- ◆ Single 3.3V power supply
- ◆ RoHS-10 compliant and lead-free
- ◆ All-metal housing for superior EMI performance
- ◆ Case operating temperature: 0°C to+ 70°C/ -40°C to +85°C



Order information

Product Number	Data Rate(Gb/s)	Wavelength(nm)	Reach(km)	LD	Tx Power(dBm)	PD	Rx Sens(dBm)	Temperature(°C)
RSPD-03D40-XX/I	1.25	100GHZ /50GHZ DWDM	40	DFB	-5~0	PIN	<-23	0~70/-40~85
RSPD-03D80-XX/I	1.25	100GHZ /50GHZ DWDM	80	DFB	-1~5	PIN	<-23	0~70/-40~85
RSPD-03D120-XX/I	1.25	100GHZ /50GHZ DWDM	120	DFB	0~6	APD	<-31	0~70/-40~85

1.25G BIDI SFP Optical Transceiver

Features

- ◆ Supports 1.25Gb/s bit rate
- ◆ Bi-direction transmission, LC Connector
- ◆ Hot Pluggable SFP form factor
- ◆ Digital diagnostic monitoring support
- ◆ Single 3.3V power supply
- ◆ RoHS-10 compliant and lead-free
- ◆ All-metal housing for superior EMI performance
- ◆ Case operating temperature: 0°C to+ 70°C/ -40°C to +85°C



Order information

Product Number	Data Rate(Gb/s)	Wavelength(nm)	Reach(km)	LD	Tx Power(dBm)	PD	Rx Sens(dBm)	Temperature(°C)
RSPD-03BD10-3155/I	1.25	TX1310/RX1550	10	FP	-9~-3	PIN	<-22	0~70/-40~85
RSPD-03BD10-5531/I	1.25	TX1550/RX1310	10	FP	-9~-3	PIN	<-22	0~70/-40~85
RSPD-03BD40-3155/I	1.25	TX1310/RX1550	40	DFB	-5~0	PIN	<-23	0~70/-40~85
RSPD-03BD40-5531/I	1.25	TX1550/RX1310	40	DFB	-5~0	APD	<-23	0~70/-40~85
RSPD-03BD80-4955/I	1.25	TX1490/RX1550	80	DFB	-2~3	PIN	<-24	0~70/-40~85
RSPD-03BD80-5549/I	1.25	TX1550/RX1490	80	DFB	-2~3	APD	<-24	0~70/-40~85
RSPD-03BD120-4955/I	1.25	TX1490/RX1550	120	DFB	0~5	APD	<-31	0~70/-40~85
RSPD-03BD120-5549/I	1.25	TX1550/RX1490	120	DFB	0~5	APD	<-31	0~70/-40~85

3G Video SFP Optical Transceiver support 1080P 60HZ Video

Features

- ◆ Supports 3.15Gb/s bit rate for 1080P 60HZ Video
- ◆ Single TX and single RX over a single fiber, LC Connector
- ◆ Hot Pluggable SFP form factor
- ◆ Digital diagnostic monitoring support
- ◆ Single 3.3V power supply
- ◆ RoHS-10 compliant and lead-free
- ◆ All-metal housing for superior EMI performance
- ◆ Case operating temperature: 0°C to+ 70°C/ -40°C to +85°C



Product Number	Data Rate(Gb/s)	Wavelength(nm)	Reach(km)	LD	Tx Power(dBm)	PD	Rx Sens(dBm)	Temperature(°C)
RSPD-3GS20-31T/I	3G	1310	20	FP	-9~-3	/	/	0~70/-40~85
RSPD-3GS20-31R/I	3G	1310	20	/	/	PIN	<-18	0~70/-40~85
RSPD-3GS40-31T/I	3G	1310	40	DFB	-2~3	/	/	0~70/-40~85
RSPD-3GS40-31R/I	3G	1310	40	/	/	PIN	<-18	0~70/-40~85
RSPD-3GS80-31T/I	3G	1550	80	DFB	0~5	/	/	0~70/-40~85
RSPD-3GS80-31R/I	3G	1550	80	/	/	APD	<-28	0~70/-40~85

3Gb/s SFP CWDM Optical Transceiver support 1080P 60HZ Video

Features

- ◆ Supports 3.15Gb/s bit rate for 1080P 60HZ Video
- ◆ Single TX and single RX over a single fiber, LC Connector
- ◆ Hot Pluggable SFP form factor
- ◆ Digital diagnostic monitoring support
- ◆ Single 3.3V power supply
- ◆ RoHS-10 compliant and lead-free
- ◆ All-metal housing for superior EMI performance
- ◆ Case operating temperature: 0°C to+ 70°C/ -40°C to +85°C



Product Number	Data Rate(Gb/s)	Wavelength(nm)	Reach(km)	LD	Tx Power(dBm)	PD	Rx Sens(dBm)	Temperature(°C)
RSPD-3GC20-XXT/I	3G	CWDM	20	FP	-9~-3	/	/	0~70/-40~85
RSPD-3GC20-XXR/I	3G	CWDM	20	/	/	PIN	<-18	0~70/-40~85
RSPD-3GC40-XXT/I	3G	CWDM	40	DFB	-2~3	/	/	0~70/-40~85
RSPD-3GC40-XXR/I	3G	CWDM	40	/	/	PIN	<-18	0~70/-40~85
RSPD-3GC80-XXT/I	3G	CWDM	80	DFB	0~5	/	/	0~70/-40~85
RSPD-3GC80-XXR/I	3G	CWDM	80	/	/	APD	<-28	0~70/-40~85

12G Video SFP+ Optical Transceiver support 4K 60HZ Video

Features

- ◆ Supports 12Gb/s bit rate for 4K 60HZ Video
- ◆ Single TX and single RX over a single fiber, LC Connector
- ◆ Hot Pluggable SFP form factor
- ◆ Digital diagnostic monitoring support
- ◆ Single 3.3V power supply
- ◆ RoHS-10 compliant and lead-free
- ◆ All-metal housing for superior EMI performance
- ◆ Case operating temperature: 0°C to +70°C / -40°C to +85°C



Product Number	Data Rate(Gb/s)	Wavelength(nm)	Reach(km)	LD	Tx Power(dBm)	PD	Rx Sens(dBm)	Temperature(°C)
RSPD-12GS20-33T/I	12G	13330	20	DFB	-6.5~0.5	/	/	0~70/-40~85
RSPD-12GS20-33R/I	12G	1330	20	/	/	PIN	<-14.4	0~70/-40~85
RSPD-12GS40-33T/I	12G	1330	40	DFB	-1~3	/	/	0~70/-40~85
RSPD-12GS40-33R/I	12G	1330	40	/	/	APD	<-15.8	0~70/-40~85
RSPD-12GS60-33T/I	12G	1330	60	DFB	-1~3	/	/	0~70/-40~85
RSPD-12GS60-33R/I	12G	1330	60	/	/	APD	<-20	0~70/-40~85